

1

Drums

♩ = 60

6

tr

3

tight with bass through m11

5

3


3

Nick Diukovsky, Jan 2004

10

Example 10

12



(this triplet is split, completed at end of measure)

MOLTEN, TORTURED, SCREAMING GUITAR SOLO, CONTINUING THROUGH m22

20

Example 20 is a single-measure exercise in 3/4 time. The notation is on a single staff with a treble clef. It consists of a sequence of eighth and sixteenth notes, some beamed together in groups of three (trios). There are 'x' marks above the first, fourth, seventh, and tenth notes. The exercise ends with a double bar line.

23



mf lock tightly with bass

first time with bass, then piano enters, then guitar enters

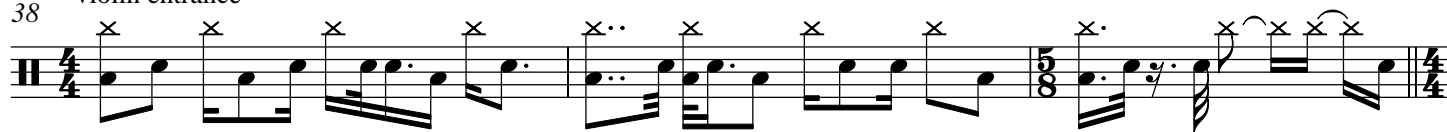
3x

32

35

Musical notation for measure 35, featuring a treble clef, 4/4 time signature, and a key signature of one sharp (F#). The melody consists of eighth and quarter notes, with some notes marked with 'x' above them. The measure ends with a double bar line and a repeat sign.

38 violin entrance



44 passionate violin solo, through m47

